

# Table of Contents

<b>Address of the President</b>		<b>Reports</b>	
Dustin Fuller - President .....	2	Residence .....	23-24
<b>Council &amp; Staff Positions</b>		ULSU on the Calgary Campus .....	24-25
New General Assembly Positions .....	3	Internal Reports .....	25
ULSU Staff .....	3	Community Initiatives .....	25-26
Permanent Staff .....	3	Daycare Report .....	26
<b>Organizational Chart</b> .....	4	<b>Political Involvement</b>	
<b>Working Together with the U of L</b> .....	5	Meetings with Political Leaders .....	27
<b>Meet the Council</b> .....	6-7	Advocacy .....	27
<b>Students' Union Operations</b>		CAUS .....	27-28
Students' Union Budget .....	8	CASA .....	28-30
Business Operations .....	8-9	<b>Events</b>	
Room & Table Rentals .....	9-10	International Exchange .....	31
Proposals .....	11-12	Community & Campus Event .....	31
<b>Students' Union Fees</b>		Events of the Year .....	31-35
Explanation of Students' Union Fees .....	13	<b>Ratified Clubs</b>	
Students' Union Fee Breakdown .....	13-14	About Ratified Clubs .....	36
<b>Resources</b>		Ratified Clubs of 2006/2007 .....	36-40
Health and Dental Plan .....	15	<b>Scholarships, Bursaries, Awards</b>	
Handbook .....	15	Laurence Decore Awards .....	41
E-Mail Stations .....	15	Students' Union Bursaries & Scholarships .....	41
Online Test Bank .....	15	Students' Union Awards .....	41-43
ULSU Food Bank .....	15-16	<b>Questions &amp; Answers</b>	
Recycling .....	16-17	Dustin Fuller .....	44
Grade Appeals .....	17	Joanne Luu .....	44
Committees .....	17	JJ Machalski .....	44
<b>Communications</b>		Angela Ng .....	44
New ULSU Website .....	18	<b>Referendum &amp; Election</b>	
Centre for Sport & Wellness .....	18-19	Universal Bus Pass Referendum Results .....	45-46
ULSU Media Report .....	19	ULSU General Election .....	46
<b>Sponsorship &amp; Funding</b>		<b>Incoming Council for 2007/2008</b> .....	47
Sponsorship from the ULSU .....	20	<b>Past Presidents</b> .....	48
Financial Assistance from the ULSU .....	20		
Sponsorship from the ULSU's QIP .....	21		
External Sponsorship to the ULSU .....	22		

**Editor and designer:** Susan Curtis - Executive Assistant. **Contributing writers:** General Assembly Representatives, Students' Union staff members. **Portrait photos:** by deJourdan's photo.graphics Ltd. **Campus and other photos:** collected from the University of Lethbridge CRDC gallery and others by The Students' Union. This is the seventh annual Year in Review. Deadlines for submissions are March 15th. Submissions in the form of photos, ideas, reports and other information are welcome. Correspondence should be sent to The Students' Union, Rm SU180, 4401 University Drive, Lethbridge, AB T1K 3M4, Attn: Susan Curtis - Year in Review. Ph: (403) 329-2503; Fax: (403) 329-2224; visit our web site at [www.ulsu.ca](http://www.ulsu.ca), e-mail [susan.curtis@uleth.ca](mailto:susan.curtis@uleth.ca). ©

## Address from the President



### PRESIDENT

First and foremost, the Students' Union is devoted to students. Day after day Council and Staff work hard to ensure all students have the necessary tools to reach their goals and full potential. When students need help, advice, or someone to assist them through a problem, their ULSU is always available to pitch in.

We worked hard this year to provide students with rewarding experiences while attending the U of L. We accomplished this through a number of our services: the Health and Dental plan, Grade Appeal assistance, the Computer Assistance Program, a free handbook, the Service Center, the campus food bank, inexpensive photocopying, an online test bank, e-mail stations, travel and conference grants, travel insurance, live entertainment at our campus pub - The Zoo, scholarships, emergency assistance, an academic speaker series, as well as support to both on and off campus organizations. In addition, we also provided student representatives for a variety of U of L and ULSU committees, and ratified a large number of clubs. All of these groups combined produce extensive student involvement and representation in diverse areas.

As student advocates and representatives, the ULSU is committed to ensure that the students' voice is always heard in any local, provincial, or federal forum. Students' interests and concerns are at the forefront of important decisions that affect all post secondary students, and we are dedicat-

ed to moving initiatives forward which influence beneficial change. There are many challenges which students face. However, these are simply challenges; not barriers, and as student leaders, we have and will continue to overcome obstacles.

Over the past two years, I have been able to do a number of things that I believe reflect the vision and mission of the ULSU. Such things include; organizing both a Provincial and Federal Candidates Debate, getting Polling Stations on campus for Residence Students, creating the Computer Assistance Program and the Alternative Transportation Committee, holding a referendum for U-Pass, bringing in Avi Lewis for the ULSU Speaker Series, providing the Information for Landlords and Tenants: Residential Tenancies Act (RTA), spearheading the ULSU Constitution and Bylaw revisions, eliminated the mandatory Bridge Bucks for residence students, getting two (2) FreeFones here on campus so students can make free local phone calls, implementing new debit machines to improve service, the SUB Renewal Project and Outdoor Patio Proposals, revising the Students' Union Liaison Committee, helping to bring SACPA on campus, addressing the CASA Aboriginal Policy, relieving CKXU debt, creating the Diversity positions, and serving as the second student in U of L history to sit on the Board of Governors Executive Committee.

The U of L is growing and becoming a first class institution. This year we introduced a new VP Academic, Chancellor, and Board of Governors Chair. The opening of the Centre for Sport and Wellness was an exciting time, as well as the discussion of adding a Medical School to the U of L campus. I applaud the accomplishments of the U of L thus far and look forward to the future. The success of the ULSU, however, is greatly shaped by the dedication and hard work of our staff, student employees and council. I would also like to

## Council and Staff Positions

acknowledge the positive relationship the ULSU has fostered with our Senior Administration. Finally, to the hundreds and thousands of students who volunteered, got involved, and made a difference, this year was truly remarkable! *Written by Dustin Fuller, President*

backgrounds cause many diverse challenges while not only attending the University of Lethbridge, but simply living in Canada as well. Thanks to their successful lobby campaign, the positions were adopted into our constitution enabling the elected representatives to have a voting seat at the General Assembly. *Written by JJ Machalski*

### NEW GENERAL ASSEMBLY POSITIONS

#### Diversity Representatives

The Diversity Representative positions have been well overdue, but finally these students will get to have their voices heard at the student government level. The two positions that were created were for an International Student Representative and a First Nations, Métis, Inuit Representative.

All international students on campus will be eligible to vote for the student candidate who they believe will best represent them on Council.

As for the First Nations, Métis, Inuit Rep, any student registered with the Native American Students Association (NASA) may run for the position and elect a representative for that position.

A group of students known as "Students for Diversity", lobbied the ULSU General Assembly for implementation of these two new positions on Student Council. This coalition put together a petition and gathered the signatures of over 700 students who support the adoption of the Diversity Rep positions. While presenting to the General Assembly, they also gave some very strong reasons why these positions should be created, some of which included the fact that these two student groups yield 14% of our campus student population. The group also stressed that their ethnic

### ULSU STAFF

The Students' Union takes pride in being an equal opportunity employer, which employs 6 full-time permanent staff, 2 part-time permanent staff and approximately 55 part-time students. Throughout the year there are temporary staff hired to help with Council driven initiatives such as Food Bank organization, scanning tests for the on-line Test Bank, special events and other jobs as they arise.

#### Permanent Staff

<b>Jon Oxley</b>	<i>General Manager</i>
<b>Randy Ockerman</b>	<i>Bookkeeper/Service Centre Manager</i>
<b>Colleen Van Raalte</b>	<i>Operations Coordinator</i>
<b>Susan Curtis</b>	<i>Executive Assistant</i>
<b>Shelly Tuff</b>	<i>Administrative Assistant</i>
<b>Kathy Broadhead</b>	<i>Health and Dental Plan Administrator</i>
<b>Ben Giesbrecht</b>	<i>Zoo Manager</i>
<b>Pamela MacLeod</b>	<i>Kitchen and Catering Coordinator</i>



# Organizational Chart

## GENERAL ASSEMBLY

Two of the following Faculty Reps are elected to the position of Directors:

- |                           |                            |
|---------------------------|----------------------------|
| 1 President               | 1 Edmonton Campus Director |
| 1 VP Academic             | 6 Arts and Science Reps    |
| 1 VP Internal Affairs     | 1 Education Rep            |
| 1 VP Administration       | 1 Management Rep           |
| 1 Board of Governors Rep  | 1 Health Sciences Rep      |
| 1 Calgary Campus Director | 1 Fine Arts Rep            |
|                           | 1 Residence Rep            |

## EXECUTIVE COUNCIL

President

VP Academic

VP Internal Affairs

VP Administration

General Manager

Executive Assistant

Bookkeeper  
Service Centre  
Manager

Operations  
Coordinator

Administrative  
Assistant

Health Plan  
Administrator

Food &  
Beverage  
Manager

Catering  
Coordinator

Chief  
Returning  
Officer

Handbook  
Ad Sales  
Agent

Service  
Centre  
Staff

Imaginus  
Staff

Pub Staff

Kitchen &  
Catering  
Staff

*Working Together*

**WORKING TOGETHER WITH STUDENTS AND  
THE UNIVERSITY OF LETHBRIDGE DEPARTMENTS**

The University of Lethbridge and the Students' Union work hand in hand to provide a well balanced post secondary education experience for students. Without the support and dedication of the Senior Administration and many departments on campus, the Students' Union would face many more challenges in the attempt to initialize projects and attain desired goals. Our relationship is ever growing and we value the professionalism, loyalty, and honor our liaison yields.

It is without saying that our organization would not exist without students. We enjoy working closely with each and everyone of them as they bring their own initiatives and goals to the ULSU for help, direction and support. It is great to see so many students become involved in student life as they offer their time, talents, and energy to the campus community.

Our focus and efforts are set to provide a safe and healthy environment for students through positive endeavours. Whether it is with University departments, a group of students, or our own internal initiatives, we are here for the students. *Written by Susan Curtis - Executive Assistant.*



## Meet the 2006/2007 Council



**David Green**  
Chair



**Dustin Fuller**  
President

3rd year Bachelor of  
Arts & Science,  
Political Science &  
Philosophy Major



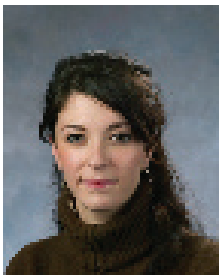
**Joanne Luu**  
VP Administration

3rd year Bachelor  
of Arts & Science,  
Biology & Political  
Science Major



**Samantha LeCerf**  
Arts & Science  
Rep

2nd year Bachelor of  
Arts & Science, Pre  
Management Major



**Charlotte Kingston**  
VP Academic

2nd year Bachelor  
of Arts & Science,  
Biology & Political  
Science Major



**JJ Machalski**  
Director &  
Management Rep

4th year Bachelor of  
Management  
Accounting Major



**Angela Ng**  
Arts & Science  
Rep

4th year, Bachelor of  
Science, Kinesiology  
Major



**Richie Evans**  
VP Internal

4th year Bachelor of  
Arts & Science,  
Geography, GIS  
Major



**Nic Barker**  
Director &  
Arts & Science  
Rep

3rd year Bachelor of  
Arts, Drama Major



**Trish Harper**  
Arts & Science  
Rep

3rd year Bachelor  
of Science, Biology  
Major

## Meet the 2006/2007 Council



**Osman Shah**  
Arts & Science Rep

Bachelor of Arts & Science, Psychology & Political Science Major



**Travis Wilson**  
Residence Rep  
January to April

4th year, Bachelor of Arts & Science, English Major



**Eric Hawthorne**  
Residence Rep  
May to December

3rd year, Bachelor of Arts & Science, English Major



**Andy Davies**  
Fine Arts Rep

4th year, Bachelor of Education, & Bachelor of Fine Arts, Art Sculpture Major



**Jeremy Girard**  
Arts & Science Rep

2nd year, Bachelor of Arts & Science, Neuroscience Major



**Logan Symington**  
Health Sciences Rep

May to December



**Krista VanderNeut**  
Education Rep

4th year, Bachelor of Education & Bachelor of Arts, Drama Major



**Jason Rumer**  
Edmonton Campus Rep

4th year Bachelor of Science, Physics & Accounting Major



**Christopher Ng**  
Board of Governors Rep

May - Dec.

# Students' Union Operations



## STUDENTS' UNION BUDGET

The ULSU Student Council have been cautious and conservative in managing an Operating budget whose expenditures have far outstripped its revenue sources. While the ULSU continues to grow and expand the list of its student services, the student leaders are also taking on greater leadership roles in representing students to government bodies. The down side to this is that its main revenue source, the student levy, has not increased for more than ten years. In short, we are doing more work with less resources. My recommendation for future Councils is to hold a student referendum to increase this student levy and tie it to inflation. Further, it is crucial that future Councils review the implementation of an externalization of advocacy fees in CAUS and CASA. This proposal to externalize fees, with a cap on annual increases, would ensure the accountability of funds. It would also safeguard our primary mandate of representing students without removing funds from competing service priorities. *Written by Joanne Luu*

## BUSINESS OPERATIONS

### The Zoo

This year has been a progressive one for ULSU business ventures. A further emphasis on service quality (set by the Executive Council) and the atmosphere created by the personal charisma of our VP Internal, Richie Evans, has brought the past \$40,000 deficit down to a minimal amount. The year at the Zoo has been marked by maximum capacity events and Flames games. With Richie Evans re-elected, the Zoo has the potential to turn a profit. *Written by Joanne Luu*

### The Service Centre

The Service Centre will run another impressive surplus this year, which can be accredited to the remarkable management of the ULSU Bookkeeper, Randy Ockerman. Through his efforts, the Service Centre continues to offer students the lowest priced goods while still turning a surplus at the end of the year. *Written by Joanne Luu*

### ULSU Debit Machines

We are happy to report that when students use their Debit, Visa or Master Card, at either the Service Center or the Zoo, they will experience a shorter wait time. The reasoning for this is because the ULSU is now running the Moneris Solutions 6200 High-Speed point of sale terminals. The same machining is used in the Bookstore with great success. Given the faster speed at which transactions are processed, students will be able to merrily get-in and get-out more conveniently at both venues. *Written by Dustin Fuller*

### FreeFone

FreeFone is a courtesy telephone that provides free local and toll free calls, and displays digital video advertising with a full range of motion and sound. FreeFone allows students to make free local calls anytime of the day. The phones are



## Students' Union Operations

located at the north and south entrances of the SU building. There is one on the wall near Subway, and the other is placed beside the ATB ATM. Last year's executive had addressed this initiative and wanted it up and running. However, the company had internal issues but I am happy to report that these issues have been worked out, and students are happy with this service. *Written by Dustin Fuller*

### The ULSU Food Court

The Students' Union Food Court is located on the second level of the Students' Union Building and provides students with seven externally owned food kiosks, one convenience store, the U of L Bookstore, as well as over 200 available seats in the common area. The food kiosks include a variety of options: Tea Castle, Icy's, Subway, Hiroba, Pronghorn Grill, Juice Fare, and the Coffee Company. *Written by Joanne Luu*

### ULSU Website

January 2007, the ULSU was excited to launch a new website! This presented a fresh, dynamic and interactive interface that serves as one of the primary contacts between the ULSU and student members. A special thanks to Fergus Raphael at Tangle Media for his diligent and creative work in custom designing a website for the ULSU, and to Susan Curtis for her endless hours working through this transition, and further hours maintaining it. *Written by Joanne Luu*

## ROOM AND TABLE RENTALS

### Ballrooms

The Students' Union operates three ballrooms that can be booked individually or collectively to create one Grand Ballroom. The total capacity of the Grand Ballroom is 564 people. The rooms are rented to both internal and external groups for a wide variety of events which include conferences, weddings, meetings, receptions, banquets, cabarets, concerts, forums, workshops, speakers, dances and many more. This room is "one of a kind", with a spectacular view overlooking the Coulees to the east side of the City.

Guests may also enjoy the full beverage service offered, along with a variety of catering options. Our Food and Beverage Manager, and Catering Coordinator are always eager to assist in customizing any event.

Whereas the Zoo (Ballroom C) is closed to regular business from May through August, the ballrooms stay open all summer to accommodate and serve rental parties.

### Galileo's

Galileo's opened in 2006, a cooperative project of the Students' Union and the University of Lethbridge, for the use and enjoyment of students, staff, faculty, alumni, and the community. This unique facility is located on the 2nd level of the Students' Union building. Galileo's wall of exterior windows is lined with permanent benches where people



# Students' Union Operations

can sit and enjoy the view overlooking the University, across the river to the east side of Lethbridge.

This space will hold 160 people comfortably, with panoramic window seating, leather sofas, love seats and recliners. Portable stacking chairs are also available if needed. This space comes complete with a drop down movie screen, built in projector, DVD, VHS, computer port and wireless internet. There is even a telescope, just in case.

This year, Galileo's hosted many art projects and small events, while at the same time keeping its open door policy for students.

## **Council Chambers**

The Students' Union Council Chambers may be used by any group affiliated with the University of Lethbridge or the Students' Union. Maximum seating capacity around the Board Table is 21. The gallery can comfortably seat 16 people, with a 24 person maximum.

Use of the Council Chambers is becoming more and more popular, especially this year, due to limited space caused by construction projects on campus.

## **Club Rooms**

The Students' Union has five rooms available specifically for club use. Four of these rooms are awarded annually through a selection of applications. The remaining club room is a large open room available for any ratified club to book free of charge.

## **Student Services Room**

Room SP150 is designated specifically for use as a student services room and is available free of charge on an annual basis, to an organization that offers unique services and/or resources to students. Applicants must meet specific criteria, and apply by May 15th.

Currently, the Women's Centre has been the only applicant since this room and policy has been created, but other groups are welcome to apply.

## **Table Rental**

The Students' Union building is a high traffic area with 7,000 students passing through each day, making it an excellent location for vendors to sell or promote goods. The Students' Union is the main administrative building, housing a wide variety of departments including the Registrar's office, Students' Union office, Health Centre, Arts & Sciences Academic Advising office and Student Liaison & Recruitment office. A popular food court, campus pub and restaurant, as well as the Bookstore and club offices, are located in this building.

The tables are situated right beside the Food Court, with the main university bus terminal just outside. It is a perfect location for attracting the interest of students.

This space is free for ratified clubs. The non-corporate rate is \$35 per day and the corporate rate is \$50 per day. Table space is very popular for vendors, recruiters, students, clubs and many others. *Written by Susan Curtis*

### PROPOSALS

#### Quality Initiatives Proposal (QIP)

Although the Student Council is working with an operating budget that is severely overdue for a significant increase, they have been able to initiate many quality initiatives for the students they represent. For the first time, the University of Lethbridge has allocated \$300,000 in QIP money for the ULSU to implement value-added initiatives to the benefit of students. This year, the monies have awarded over one hundred scholarships and bursaries (worth \$105,000), enhanced our existing Travel & Conference and Emergency Student Assistance Grant programs, funded a renovation of the Student Food Bank, launched a brand new ULSU website, and supported student-run shows as well as informative and professional development workshops: Political Action Week, "These Proportions are Epic" and the "Fine Arts Extravaganza."

QIP monies represent a substantial pool of funds for student councils to enact quality initiatives, with the trust and support of the University of Lethbridge Administration. Despite the tangible benefits QIP funding offers to students, there is much controversy surrounding the existence of these funds during a time when the institution is constrained by limited resources to implement capital and quality expansions. Therefore, it is important that as we move forward on this dynamic and cooperative initiative with the Administration, the Student Council will continue to refine this process and honour our commitment to approve expenditures that are accountable, have the capacity to benefit every student (ex-

cept in needs-based cases), and offer value-added enhancements to the student experience. *Written by Joanne Luu*

#### Opening up study spaces

As an incoming fourth year student, it has become blatantly clear that the small amount of study spaces, particularly late-night spaces, available to students is unacceptable for an academic institution of this quality. To rectify this situation, Executive Council negotiated an extension of the hours of accessibility into the SUB until 2 a.m. Late-night studiers are offered a versatile environment for a diversity of study habits. The food court space allows the traditional student a conventional table and seat. Galileo's Lounge was installed with comfortable furnishings and fabulous student art to invite an intimate setting, offering another atmosphere. While the concept of a late night study space has been slow to catch on (though growing more popular by the day), due to a lack of visibility, the furnishing of Galileo's Lounge has had an unexpected but pleasant consequence of becoming a popular social space. This space has also become ideal for group functions. It will be exciting to see this beautiful space utilized to its full potential in upcoming years!

*Written by Joanne Luu*

#### Building Proposals

The purpose of the SUB Renewal Project is to identify a vision and strategy to renovate the Students' Union Building to be bring added value to our campus. The concepts and ideas found throughout the proposal have been identified by different students, University staff and visitors, over the last few years. Specific ongoing discussions include Univer-



## *Students' Union Operations*

sity of Lethbridge Departments Capital Projects: Physical Plant, Registrar's Office, Counseling Services, Faculty of Fine Arts, the U of L Bookstore, Health and International Centre, and Students' Union clubs. The added value to our campus, specifically, will enable greater social interaction, comfortable seating, and preferred study areas on campus.

The University of Lethbridge Outdoor Patio and Art Gallery is another avenue which brings added value to our campus. Presently, there are a number of outdoor spaces throughout the University, such as the level 6 Patio, and pocket spaces south of University Hall, the west entrance into U-Hall and the Fine Arts Building, and seating areas outside the LINC building, Andy's Place Patio, as well as the Students' Union building south entrance patio. Although these locations do provide an area for students to converse and study, these spaces were not primarily designed to accommodate an intimate and larger outdoor venue for social gatherings. Andy's Place Patio is used by groups of people for barbecues and other small-scale functions.

Creating a new outdoor patio would accommodate events such as Fine Arts and/or Music Department events as well as other musicals or plays, which could be broadcast by the University of Lethbridge campus radio station CKXU. Student Clubs could also use it for various activities they may wish to host. Moreover, the space could provide an attractive setting for outdoor banquets or catered events, a garden tea instead of hosting it in the Students' Union Ballrooms, a safe and secure environment, and lastly, a place for visitors or community members to relax whilst walking on university

pathways. This area would be designed to host and comfortably accommodate large events and gatherings. It also has the potential to have in place theatrical seating, shelter, full patio sets, as well as portable or permanent fencing; depending on the need. Such details would be incorporated into the Architectural plans.

The proposed location for this patio is the abandoned tennis court. Redesigning the use of this space into the "Students' Union Outdoor Patio" is a practical and feasible use of this space due to its proximity to the Students' Union Building. An outdoor patio would not only cosmetically enhance this space on campus, but would be enjoyed by a number of potential user groups such as the University Administration, Faculty, and students, commercial tenants within the Students' Union Food Court, Campus Security, Care-taking, Physical plant personnel, as well as visitors and friends of the University.

It is the intention of this proposal to adhere to the concept and general layout of the University Master Plan, and to maintain the views of the coulees and other areas around campus. This proposal has been derived from previous student artwork based on the vision of the Students' Union Building before construction commenced. The original plans for the SUB included an outdoor patio, which has not yet been realized. It is the hope of this proposal to not only bring to life a beneficial yet aesthetically pleasing addition to the university campus, but to also provide a space that will attract and retain more students and campus members.

*Written by Dustin Fuller*

# Students' Union Fees

## EXPLANATION OF STUDENTS' UNION FEES

Not only does the Students' Union exist to provide services and scholarships, but it is also part of a network of representation and lobbying that spreads right across the country. All students receive tangible benefits from their Students' Union on a regular basis. As individuals, students may not realize that their income tax benefit, increases in monthly living allowances came from years of federal committee work by student interest groups. Your local Students' Union fights to keep tuition fees as low as possible and offer a wide variety of services. Some of these services include scholarships, emergency loans, and health & dental benefits at a reduced rate.

Below is a brief outline of the Students' Union fees, followed by a fee explanation. Other fees are collected by the Students' Union as the result of student referenda on behalf of other student organizations: the Campus Women's Centre, Lethbridge Public Interest Research Group, and CKXU Radio. The Students' Union receives these fees from the University, on behalf of the these organization, and turns them over to the respective agency. In the interest of accountability, the Students' Union and University are obligated to monitor agencies which receive public monies.

FEE TYPE	PART-TIME	FULL-TIME
Operation Fee	\$10.43	\$21.27
Building Fee	\$12.92	\$28.36
Capital Replacement Fee	\$ 2.68	\$ 5.35
<b>TOTAL</b>	<b>\$26.03</b>	<b>\$54.98</b>

## STUDENTS' UNION FEE BREAKDOWN

### Operation Fee

The Operation fee is the component of cost related to the operating of the Students' Union on a day-to-day basis. These services include providing representation for all students on permanent boards and committees, provincial and federal lobby groups, student loans and scholarship boards, provincial advisory agencies, and a wide range of ad-hoc local/provincial/national bodies responsible for monitoring or advancing student quality initiatives related to; campus day-care, student travel costs, student tax breaks, international student work permits, transit pass negotiations, transferable work and health permits, etc.

Over the years, Students' Unions have collectively negotiated student discounts on a variety of services including local and Greyhound (Grey Goose) bus lines, VIA discounts, air travel student standby rights and countless other areas where student organizations have negotiated student access (museum cards, international identity cards, Hostelling International representation).

Students can see personal results of lobbying efforts in the form of student loan rights, appeal processes, grade appeal allowances, scholarship rights, and even the cost of a local transit pass.

### Scholarships

This Students' Union maintains an infrastructure financed by the Operation Fee, which not only directly creates scholarships but also works on lobbying to increase scholarships to help make education more accessible.

# Students' Union Fees

## **Appeals/representation**

Many students, at some point in their education, require some form of student representation. Some need to appeal their grade, some need extraordinary help while on exchange, some get very sick and require someone to do something for them; that's what the Students' Union does or helps negotiate. Every week there are dozens of students with unique needs. The Operation Fee goes towards maintaining this infrastructure of staff, copiers, phones, furniture etc., and to "be there" when a student has major or even minor problems.

## **Students' Union Health and Dental Plan**

Fee - \$135/Year for Health, and \$110/Year for Dental:

This is a referended (1990, 1995, 1997, 2003) MANDATORY fee, which has been upheld in referendums since. Even though this is a mandatory fee, students may opt-out if proof of alternate coverage is presented along with the completed opt-out form, as long as it is submitted by the opt-out deadline.

## **Campus Women's Centre (CWC)**

Fee - \$1.00 per semester:

This is a recently referended (2004) NON-MANDATORY fee which commenced in the Fall of 2005. Students may request a refund from the Campus Women's Centre.

## **Lethbridge Public Interest Research Group (LPIRG)**

Fee - \$5.00 per semester:

This is a referended (2001) NON-MANDATORY fee which

commenced in the Fall of 2002. Students may request a refund from the LPIRG Office.

## **CKXU Radio**

Fee - \$3.00 per semester:

This is a referended (2000) MANDATORY fee which commenced in the Fall of 2001.

## **The Meliorist, Student Newspaper**

Fee - \$5.00 per semester:

This is a referended fee commencing in 1967, which has been upheld in many referendums since. This is a MANDATORY fee subject to the constitution and membership provisions of The Meliorist Publications Society. These fees are collected by the University of Lethbridge and distributed directly to The Meliorist. *Written by Jan Oxley - General Manager*



### HEALTH AND DENTAL PLAN

Regular full-time students at the University of Lethbridge, are provided with a comprehensive set of extended health and dental insurance benefits. Coverage is in effect September 1 to August 31 for full-time Fall semester registrants, and January 1 to August 31 for full-time Spring semester registrants. The plan includes health, dental, accidental death and dismemberment, repatriation, accident tutorial, accidental dental benefits and travel insurance. This is a very affordable plan and is an excellent way to keep healthy while attending the University of Lethbridge.

### HANDBOOK

This is a daytimer created especially for U of L students, complete with deadlines, important notices, a time table, address section, grade tracker, service pages, survival guide, the Zoo menu, Student Council bio's, and coupons. There are now 5,000 books printed each year and the best part of it is ... it's FREE. Our advertising team collects advertisements from businesses all over the city and it is through these ad placements that allow this book to pay for itself.

### E-MAIL STATIONS

The Students' Union provides approximately 12 e-mail stations for students to use to check their mail or to browse the internet. They are located on Level 2 of the Students' Union Building in the Food Court area.

### ONLINE TEST BANK

The Students' Union operates an online test bank for fellow students at the University of Lethbridge. It helps students take advantage of documents to better understand the Professor's exam style, quizzes and tests in their respective classes. The need for an online Test Bank was to reduce the cost, travel and timing issues for the students and make the tests available to them twenty four hours a day, seven days a week.

### ULSU FOOD BANK

The ULSU Food Bank has undergone some dramatic and fabulous changes over the past year. The bulk of those changes are thanks to Kathryn McKenzie, and the funds made available through the Quality Initiatives program. Because of Kate's work over the summer, the ULSU executive boardroom/food bank has now been permanently converted to a food bank. The flooring was removed in order to comply with health standards, the walls were painted cheerier colors, desks, hamper storage, and more shelving units were installed in order to maximize utilization of the space. The space looks great!

Even more important have been the changes of the committee structure, and the informational continuity of the organization. The committee has been formatted to include 10 separate positions, with a rotating Chair, so that each committee volunteer is charged with a task, and can develop ownership over their work. This has been incredibly



## Resources



and increasing the efficiency of the Committee. A very thorough archival of past work and research was performed by Kate. As a result, all of the Food Bank's previous initiatives are available in the Food Bank files. Further, the Food Bank has now expanded its services into bulk repackaging; which means that important nutritional items like flour and powdered milk can now be included in the hampers.

A very successful Halloween "Trick or Eat" food drive was conducted, followed by the annual faculty and staff food drive. Since then the Food Bank has thrived based on community donations; with scarce items being bought by committee members through existing food bank funds and cash donations. A very special thanks goes to the Organization of Residents Students who donated over \$1000 worth of protein rich peanut butter!

A special thank you belongs to Kate McKenzie, without whom none of these changes would have been possible. Thank you to all those clubs, departments, students, and community members who donated and volunteered with the bank this year. You have been instrumental in creating and supporting the growth of the food bank, and you have helped out fellow members of your community when they were in need. Your help and your spirit deserve acknowledgement and thanks. It has been my pleasure to oversee these changes over the past year, and to observe the exponential growth of the Food Bank, and its great potential in the future. *Written by Charlotte Kingston*

### RECYCLING

The University of Lethbridge prides itself in being forefront with environmental issues and the Students' Union is no exception. The can and bottle recycling on campus was started by Students' Union in 1988. In 2005, the U of L purchased hundreds of bright blue recycling bins with the words "Recycle and Support Student Scholarships" on the side. These bins can be found throughout campus and they gather over 200,000 empties which are recycled into Scholarship dollars. In 2006, this will mean many thousands of dollars provided back to students.

This Recycling Program is a partnership between the Students' Union, the U of L and Quest Support Services. Quest provides active living activities to help clients with special needs maintain useful employment in the community. Quest is the key to successful operation of this recycling/scholarship program.



*Resources*

The ongoing success of the campus recycling program is contingent upon everyone using it properly - ie: only placing recyclables into the bins, and not garbage. The long-range goal of the program is to capture virtually every empty recyclable container which is sold throughout campus, and we're only about halfway there. *Written by Jon Oxley*

**GRADE APPEALS**

The grade appeal process can be a very intimidating procedure for students, and often leaves many unanswered questions as to what should be done next. The Students' Union understands this and is here to guide students through this process, addressing any questions or concerns they may have.

**COMMITTEES**

There are approximately 50 annual University committees to be filled with motivated and dedicated volunteers. Being a student volunteer on a committee is a great way to understand the workings and personalities of the University and may even qualify students for more scholarships. Volunteer committee experience shows possible future employers that a student may have commitment, drive, and a knowledge of how meetings work.

Becoming a member of a University of Lethbridge committee is a serious responsibility, as well as a unique opportunity to speak on behalf of the students. Each committee

at the U of L has certain roles and responsibilities for the entire University and attendance is of the utmost importance. Membership can present both a positive and exciting outcome. Students meet faculty and staff from around the campus who care as much about this institution as students do. Using their knowledge and expertise to its fullest can be very rewarding. *Written by Susan Curtis*



## NEW ULSU WEBSITE INITIATIVE

This year, the ULSU launched a new website with much excitement! This presented a fresh, dynamic and interactive interface that serves as one of the primary contacts between ULSU and its student members. A special thanks to Fergus Raphael, Tangle Media, for his diligent and creative work in custom designing a website for ULSU. *Written by Joanne Luu*

## CENTRE FOR SPORT AND WELLNESS

### Naming of the Centre for Sport and Wellness

The First Choice Savings Centre for Sport and Wellness has been funded by the City of Lethbridge, the students of the University of Lethbridge, the University of Lethbridge and private investors. A facility of this calibre will certainly enhance the quality of one of Canada's premier learning experience. It was built as a commitment to provide each student with the most vital and engaging learning environment in the country. It is not often that students are able to participate in the opening of a new building here on campus. I had the privilege of participating in this historic event by sharing the stage with remarkable people, including The Honorable Lyle Oberg, Preston Manning, Mayor Bob Tarleck, Board Chair Robert Turner, President Bill Cade, Chancellor Shirley Debow, and Lieutenant Governor of Alberta, Norman Kwong. *Written by Dustin Fuller*

### Fitness Centre Re-naming

In the 2005/2006 year, students voted in favour of contributing 2.5 million dollars to support the Centre for Sport and Wellness. In recognition of the contribution, students were given the opportunity to name the fitness centre in the new

building. After controversy over the chosen name from the previous year, the 2006/2007 Students' Union created a Fitness Centre Re-naming Committee, to re-name the facility. Seven General Assembly members from the Students' Union formed the committee and endured the time restraint process during the month of November 2006.

The process and outcome included the following: On November 2 the committee met to determine a thorough process. Name suggestions for the new fitness centre could be entered through an on-line ballot set up by I.T. or by paper ballot at four various locations around the University of Lethbridge campus (Students' Union office, Library, the on-campus bar (The Zoo), and the Fitness Center). Paper ballot boxes were available to students on November 6. As for the on-line ballot, a direct link as well as a description of the process was placed on the Notice Board of the University of Lethbridge website starting November 7. Reaching out to all individual students at the University of Lethbridge, the Students' Union President notified each one regarding the Committee's plan of action via e-mail, with a letter from the Committee Chair. All ratified clubs were also notified with a similar letter written by the committee chair through e-mail, from the Students' Union VP Internal. An advertisement created by the Operations Coordinator, placed in the student run newspaper (The Meliorist), briefly informed readers of the process, for two consecutive weeks (November 9 and 16). Both methods of name suggestions (on-line and paper ballot) ended on November 15 at 4:00 p.m. A total of 117 suggested names came from the paper ballots and 221 names from the on-line ballots, with a total of 338 suggested names. On November 15, the Committee met to pick ten names out of the 338. The following day (November 16), committee members randomly asked for preferences of the top name from students and faculty members in the Atrium, U-Hall, Students' Union building and the Physical

Education Building. A total of 218 people were asked for their preference. An open house was held from 4:00 p.m. to 7:00 p.m. on November 16 in SU180 for people to see the ten names and provide feedback to the Committee. After the open house, the committee narrowed the list of ten down to three, remembering to take into consideration the feedback given to them and the number of tally “votes” for each name. A special General Assembly meeting was held on November 17, where the committee brought forth the names and the Executives and General Assembly voted for one of the three names. The name that was voted in was a Latin name, “Sanus Vita”. There were many reasons as to why the name was chosen. The main reason was to play off and keep with the Latin theme of the University’s emblem “Fiat Lux”.

The new fitness centre in the Centre for Sport and Wellness building has been renamed by the Students’ Union as “Vita Sanus”, as the proposed name had to be approved by the University to ensure proper spelling, translation, etc. After seeing the controversy from the name chosen in the previous year, responses have been positive. There have not been many complaints or negative responses regarding the newly named facility by the 2006/2007 Students’ Union.

*Written by Angela Ng*

### ULSU AND THE MEDIA

The University of Lethbridge has a unique role in the local community due to the fact that student enrollment is equivalent to almost 10% of the total population of the city of Lethbridge ‡ †. This means that student life, the plight

of the student, as well as student activities have a profound effect on the local community.

One of the goals for the ULSU this year was to generate more media attention by effectively communicating its goals and latest initiatives to the public. By increasing the number of news releases sent out to the public and by developing more newsworthy events, the ULSU has reached this goal.

In conjunction with the University of Lethbridge Communications Department, the ULSU works closely with ULSU ratified clubs to help promote their events. Clubs, therefore, by association, also generated media exposure for the ULSU.

The product of all of this great media attention has engendered free advertising dollars for the ULSU. This year, close to \$75,000 was generated in exposure advertising through external radio, television, magazine and newspaper outlets. Of this total, more than \$50,000 was generated as a direct result of media releases sent out by the ULSU.

Some of the larger media highlights this year included the Universal Bus Pass (U-Pass) Referendum, Political Action Week, student contribution to the new Health and Wellness Centre and the ULSU’s response to lack of government funding.

‡ *University of Lethbridge, Institutional Analysis Facts Book 2006-2007.*

† *City of Lethbridge Census, April 1, 2006.*

*Written by Colleen Van Raalte*



# Sponsorship and funding

## SPONSORSHIP FROM THE ULSU

### “Pretty Witty and Gay” Event

Sponsorship of \$1,420 for the March 2007 event was originally going to come from the ULSU’s QIP funding, but after much discussion it was decided that funding would come from the ULSU’s operating budget. This event was first performed in Lethbridge four years ago, with its first show in one of the studio classrooms. The first show was an unexpected success, which provided both an alternative venue for students to showcase their talents as well as an alternative outlet to give a voice to the Gay community. Since then, it has taken place in either the University Theatre or in the David Spinks Theatre (both are on this campus). The March performance incorporated both the community and the diverse groups of students. *Written by Nic Barker*

## FINANCIAL ASSISTANCE FROM THE ULSU

### Club Funding

The ULSU provides a variety of avenues to financially assist students in their university endeavours. Based upon a qualified application, every ULSU Ratified Club is eligible to receive either a Start-up Grant, a Matching Grant or both during an academic year. The Start-up Grant is available to new clubs who have not been ratified within the previous three years and this has a maximum of a \$200 value. A Matching Grant has the same value and is available to any club twice a year as long as qualifications are met. The budget line was maxed out at the end of the academic year at \$7,000.00.

### Travel and Conference Grants

These grants are made available to students and clubs who have enrolled in a conference and require some financial as-

sistance. Applications must follow the proper guidelines to be eligible. The ULSU Travel and Conference fund of \$5,000 for 2006/07 was depleted early in 2007, however, because of the QIP funding there was an additional amount available so students were not left in a situation where they could not attend their conferences.

### Emergency Assistance

The Emergency Assistance application is made available to students who find themselves in a temporary financial crisis. During 2006/07, the ULSU granted \$5,000 to students who were eligible, with an additional amount granted from the QIP budget line. The program is set up to assist students in a temporary situation, but if a student finds him/herself in a continual crisis, then we encourage other avenues of assistance or options. We are proud to have this funding available and hope that it will help students get back on track.

*Written by Susan Curtis*



## Sponsorship and funding

### SPONSORSHIP FROM THE ULSU'S QIP

#### "These Proportions are Epic" Concert

The ULSU sponsored, "These Proportions are Epic", which was a variety show that combined the original music of U of L student Michael Fitzgerald, with the composing power of Bente Hanse, and student Jessie Plessis. The show also consisted of dramatic scenes written by Colby Cseke, and dance performances choreographed by Christina Calgar. The show consisted of a twenty piece orchestra, fifteen-piece choir, dance students, theatre students and new media students. The show essentially combined all facets of performance here at the University of Lethbridge. However, it did not only play during January 2007 at the U of L Theatre, but also traveled to the Calgary and Edmonton campuses during February of 2007. This event received a great deal of positive feedback regarding the 'impressiveness' of this show and was well worth the \$7,500 sponsorship from the ULSU's QIP fund.

#### Fine Arts Professional Initiative

Sponsorship to the Fine Arts Professional Initiative was provided in the amount of \$2,505.00. While the University regularly holds career fairs and professional development courses for students, the content of these courses typically gravitates towards skills and employers which suit students in Management, Education and the Sciences. An unfortunate side-effect of this is that many University of Lethbridge graduates in the Fine Arts do not gain some of the skills or processes which help them to move forward from graduation and establish themselves as Artists, Academics, or both.

In response to this, a financial proposal was submitted to the ULSU to aid in the organization of a series of workshops and discussions over a two week period in January of 2007. Funding was unavailable from the Fine Arts Faculty though they did assist the project in other ways. Both the organizers and participants enjoyed the fruits of this activity.

*Written by Ben Hart - Fine Arts student*

#### Emergency Assistance

In addition to the ULSU Emergency Student Assistance operating budget, we provided an extra \$5,000 from the QIP budget line this year to assist those students in need. It is important to note that each student has a unique financial circumstance and taking into consideration how unpredictable life is, at some point any one could find themselves in a crisis situation. During these times, the ULSU encourages students to remain enrolled by providing an avenue of relief through the Student Emergency Assistance application.

#### Travel and Conference Grants

The ULSU has a very limited budget line which is replenished annually for students who request financial support for their travel and conference expenses. The purpose of this line is to sponsor students so they can enhance their educational experience in their field of study. This budget line is always depleted near the end of the year which leaves many students without the support of the Students' Union. However, with benefit from QIP monies, those students who would normally be out of luck to qualify were able to receive their requested funding. There was an additional amount of

# Sponsorship and funding

\$5,000 which was allocated to these students' conference endeavours. *Written by Susan Curtis*

- Infamous Board Shop
- Travel Alberta
- Ascent Cycle

## EXTERNAL SPONSORSHIP TO THE ULSU

The ULSU hosts a number of events and activities for students, and it is with gratitude that we publicly thank our 2006/2007 sponsors, for without them the events would not have been as successful as they were. Some of these events and/or initiatives are listed below along with their corresponding sponsors (In alphabetical order). *Written by Susan Curtis*

### Week of Welcome

- Benchmark Angus Beef
- Coca Cola
- Old Dutch
- Rockport Hutterite Colony

### Bridgefest

- Castle Mountain
- Coca Cola
- Molson
- Rock 106

### Warren Miller Ski Film

- Alpenland
- Castle Mountain
- Resorts of the Canadian Rockies

### Bursaries/Scholarships/Awards

- Campbell and Company
- Coca Cola
- Coffee Company
- Bill Chapman
- Zoom Media

### General Sponsorship

- Coca Cola

### Food Bank Donations

- Anonymous donations
- Graduate Student Association
- Growing Alberta
- H & H Smith
- History Department
- Individuals - Students, Faculty, Staff, Community
- Japanese Animation Manga Society
- Judo Club
- Management Student Society
- Neuroscience Department

### Food Bank Drive

- Inter-varsity Christian Fellowship
- Organization of Residence Students

**RESIDENCE**

**Residence Report**

The 2006/2007 school year has been a busy one for the Organization of Resident Students (ORS). We saw many changes in regards to our organization, including the establishment of the Kainai apartment building, as an exclusively first year residence facility commencing September 2007, and the creation of six new Resident Assistant (RA) positions as a result. The inner workings of our organization also saw change, as our elected President, Eric Hawthorne, made the difficult decision to step down from our council, as well as his studies for the spring semester. It speaks volumes to Eric's work ethic and his dedication to ORS, the Students' Union (SU), and the resident body, that our council decided to elect a representative to the SU General Assembly for the remainder of the year rather than a new president and share the presidential duties as a group. Our success as an organization this year is a direct result of Eric's efforts and we look forward to having him back on our council in September.

If there is one aspect of residence life that can be looked forward to consistently every year, it is our cabarets, and this year was no exception. September started with our most successful cabaret ever, our Hawaiian theme, and while this event is always our most successful, 2006 rewrote the history books. In a year that would see the Zoo reach new levels of success, our Hawaiian cabaret opened the flood gates! October's Halloween cabaret carried that momentum and, as is tradition our November Christmas Formal at the Lethbridge Lodge left us with many fond memories. The Lodge continued to impress participants by providing a fantastic meal, while The Bamboo Guppies ushered in a new era of live music to our event. Residence students didn't miss a beat in January as we returned to the Zoo for our New Year's

cab and welcomed the spring semester in style. February's Western cabaret marked our annual tribute to our southern Alberta roots. March concluded our successful run with the Casino cabaret, and an old-Vegas style extravaganza. Residents came out and were able to kick back, playing with fake money, vying for the chance to bid on and win one of the many great prizes we purchased and collected, including some great donations from the ULSU.

Picking up where last year's president Grant Paul left off, ORS continued our support of University Theatre and Pronghorn's athletics. Starting the year off attending the Men's hockey home opener victory over UBC and the home openers for our Men's and Women's basketball teams gave birth to new crop of Pronghorns fans that followed our teams throughout the season. Our trips to the University Theatre for various performances, including the spring production of "Angels In America" and "These Proportions Are Epic" introduced many students to the fantastic talent that our university has to offer.

What separates this year and this council from those past were our contributions to the university community and the community at large. Among our many goals, increasing our involvement with the SU Food Bank topped the list. As we have in years past, all tickets to cabs were offered at a reduced rate with the donation of a non-perishable food item and RAs organized events that were subsidized with a food bank donation. These donations resulted in the contribution of over thirteen hundred food bank items over the course of our two semesters. We increased our efforts this year by holding a raffle in December, with the support and donations from Sodexo, the Students' Union, Ancillary Services, the Housing Office, Hospitality Services and Anne Baxter. We raised \$1000.00, which resulted in the donation of \$800.00 worth of peanut butter and a \$200.00 gift cer-

## Reports

tificate to increase whatever reserves were in short supply. Our community involvement expanded with the creation of a volunteer committee which was responsible for the organization of a clothes drive within the residence and will take an even more active role within our community in the coming year. ORS joined in the fight against cancer by lending support to the head shaving fundraiser that took place on campus with donations going to the Alberta Cancer Society. Those donations were aided significantly by the efforts of many of our residents, including two RAs, Matt Thibault of Kainai and Dave Ladner of U-hall, with Dave's fundraising efforts totaling \$3,216.

Our expanding council will face many challenges in the coming year, but our goals of a renewed activity space behind Paterson Centre, including a basketball court and developed green space as well as revamped Kainai communal areas, should address some of these concerns.

Anne Baxter has been a real friend to our organization in the past year, and we would be remiss if we did not take this opportunity to thank her. Anne has gone above and beyond her ever expanding professional role and taken many of us under her wing, providing support, comfort, and suggestion. With her help we look forward to introducing our residents to her alcohol awareness presentation "It's Not About Not Drinking" next year.

ORS would like to thank Dustin Fuller, Nic Barker, Samantha LeCerf, and J.J. Machalski for their involvement within our organization and support throughout the year. We also wish to thank Amy Gilmore (U-hall), Warren Kerney (Communications Manager), Katy Niksic (New Village), Matt Thibault (Kainai), for their time within our organization, and a special thank you to Bobby Albano (New Village), for her two years of service, and best of luck as she leaves our organization a graduate of our university and Len Schmid (Business Manager), who also graduates and continues her education in

Saskatchewan. Finally to the ULSU staff, GA, housing staff, new and returning RAs and Executive you have our appreciation and our gratitude for all the work that you've done in the past year. Thank you. *Written by Travis Wilson*

### **Bridge Bucks**

Residence students raised a great deal of concern about the University run program called "Bridge Bucks". The Bridge Bucks program stated that for every student in Residence, there would be a mandatory fee of \$100. This money could be used at any of the Food Services facilities throughout the campus. It is my understanding that this unilateral decision was ushered in by a previous ORS council. Nic and I spent some time determining just when this occurred, because it is my strong opinion that this service was implemented in residence on some very faulty terms and pushed through without going through due process.

While the Bridge Bucks program does show promise in its ability to provide a useful service to students, the simple fact that it was implemented without asking residents if they agree to a fee increase was in my opinion, unjust. Just like the Student's Union, the residence council of The Organization of Residence Students cannot force a fee increase upon students without going to a general referendum of its own population.

After discussions with key people from the University, ORS, and the ULSU, this issue has been resolved and the 'Bridge Bucks' are now optional to all students, even those who live in residence. *Written by Eric Hawthorne*

### **ULSU ON THE CALGARY CAMPUS**

For a majority of this year, there was no General Assembly Representative for our Calgary campus students. It is challenging for our Calgary Campus Reps to feel as if they



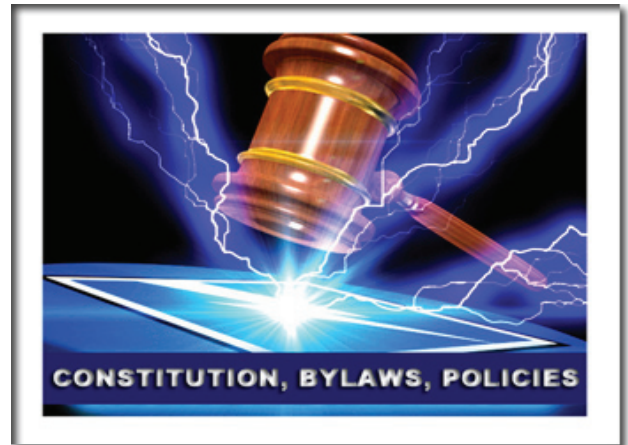
are a part of this campus, because of their distance from Lethbridge. Secondly, most students on that campus are individuals who work, and take classes in the evening. While the campus is still able to function effectively without a Rep., having one in Calgary makes their lives much easier if they have questions related to the SU. Thankfully, we have Danielle, in Calgary, who is a very dedicated and hard working employee of the ULSU and the University. Danielle handles our Health and Dental Plan, and in the absence of a Calgary campus rep., she has also taken on many responsibilities, like preparing for ULSU elections and organizing events on campus. We owe her many thanks for her great work this year! *Written by JJ Machalski*

### INTERNAL REPORTS

#### Report on ULSU Constitution and Bylaw Revisions

The ULSU GA of 2006-2007 revised the current Students' Union Constitution and Bylaws. There was a committee made up of 10 ULSU GA members, and the Executive Council. The goal of this committee was to have these documents revised and adopted by the end of February in order to come into effect for next year's council. This initiative is something I campaigned on, and I am happy to report that it came to fruition. It was important to do this, because the ULSU will only grow and develop and prosper by having a proper and efficient foundation to build upon. This initiative was a huge undertaking, and a special thanks and appreciation has to go to the hard work, dedication and drive of Jon Oxley, Randy Ockerman, Ben Hart, and Council. The current Constitution and Bylaws have not changed substantially since it was first drafted in 1989/90. Changes included a more developed Constitution, which turned a six page document into 16 pages, as well as a clean up and update of the Bylaws. This initiative was a lot more challenging than I predicted, and changing the ULSU Policies will be a task for the incoming Council. The second part of this initiative is to

adopt and build upon the ULSU Strategic Plan. I am confident that next years council will finish where we left off, and the SU will benefit greatly from it. *Written by Dustin Fuller*



#### The Management Faculty

The University has finally gotten the ball rolling on the new Management and Health Sciences building. There is still much work to be done before construction starts and things are moving along in a positive direction. Students, faculty and staff of the Management faculty are very excited at the prospect of our own brand new building. *Written by JJ Machalski*

### COMMUNITY INITIATIVES

#### Community Service Initiative

University of Lethbridge students comprise approximately 10% of the city's population, and so it is important for us to explore and contribute to the community that surrounds us. Some of the most important lessons are not learned in the classroom. Rather, they are the ones gathered through involvement with our community. Our community members

## Reports

offer a wealth of knowledge, which often remains untapped from the classroom setting. By serving our community, students are able to broaden their own skills and perspectives, learning about community needs, dynamics, practicality and functionality. It is with this recognition that many professional programs and employers emphasize a volunteerism component in their assessments.

The ULSU encourages our students to contribute back to the community we live in, while at the same time helping students gain invaluable experience for their future. To achieve this goal, the ULSU developed a partnership with "Volunteer Lethbridge" which is a non-profit organization that enriches the Lethbridge community by facilitating and supporting the advancement of volunteerism.

This initiative provided volunteering options for students, which were accessed by choosing from a long descriptive list of available volunteer opportunities on our website. Despite the hectic life that university students often lead, many U of L students also took leadership roles in committing to volunteerism through their clubs. The ULSU hopes to further support and facilitate these initiatives as much as possible on an ongoing basis. *Written by Joanne Luu*

### **Citizens for Safe Passage**

"Citizens for Safe Passage" is a committee of which I have been a part of this year. One of the purposes of this committee was to encourage the City of Lethbridge to build a pedestrian overpass above the first exit off of Whoop-Up Drive while traveling west bound, heading north bound onto University Drive. In support of implementing an overpass we held a "Citizens for Safe Passage March". The activity started here in the Students' Union Ballrooms, proceeded to Father Leonard Van Tighem School on the West Side, and finished back at the Ballrooms. The Students' Union offered their support by waiving the Ballroom fees, and supplied

\$500 in beverages and snacks for those in attendance. There were over 200 people in attendance offering support and encouragement for this initiative. *Written by Nic Barker*

### **DAYCARE REPORT**

The initiative for an on campus daycare has been a growing project since the Daycare Action Committee (DAC) was first organized in 2004, under the direction of the Students' Union President, Lorelee Edwards. The Committee was originally formed to conduct an on campus childcare needs assessment. During the following year this committee became student driven, and since then DAC reports have shown that over 1000 students have signed a petition expressing their support. According to Charlotte Kingston, "Hundreds of letters from across the country have come in expressing the same, and on several occasions students, faculty, and staff have gathered in large numbers to move along the cause".

This Committee feels largely, "the push for on campus childcare is a call for inclusivity and equity, as the University of Lethbridge is one of the only Universities in the country to be without childcare". Members of the DAC have presented an extensive proposal to the Board of Governors, but at this point there has been no formal approval for on campus childcare.

Although the ULSU was originally in favour of striking up the assessment committee, there has not been a regularly convened General Assembly meeting to discuss or decide on a formal position the ULSU would hold regarding any depth of support. From DAC studies, it is clear there is a desire for on campus childcare but there are a lot of factors involved with a decision of this magnitude. Ongoing evaluation precedes a formal decision from the ULSU. *Written by Susan Curtis*

## Political Involvement

### MEETINGS WITH POLITICAL LEADERS

Being the ULSU President is an honor, and I am so appreciative of being able to represent students and their concerns to people who can do something about it. This year I was able to bring forward student concerns, which included the environment and transit, Aboriginal education and enrollment, University Capital Projects, Post Secondary Funding, cost of education such as tuition, and cost of living considerations. The people who I participated in discussions, included the Alberta Premier Ed Stelmach (Minister of Advance Education), the Honorable Doug Honer, the Honorable Stephen Dion, Martha Hall Finley, the Honorable Clint Dunford, the Honorable Rick Casson, the Honorable Bridget Pastoor, the Honorable Jim Dinning, the Honorable Dave Hancock, Lieutenant Governor of Alberta Norman Kwong, the Honourable Lyle Oberg, the Honorable Preston Manning, the Honorable Dave Taylor, and His Worship Mayor Bob Tarleck. *Written by Dustin Fuller*

### ADVOCACY

As one of the two external representatives for ULSU to CAUS and CASA, I am proud to have served on such progressive, effective and member-driven organizations. While both lobby organizations enjoyed significant successes, it is important to point to our proudest moments within this framework. At CAUS, ULSU delegates pushed to shift traditional advocacy priorities focused narrowly on tuition, to

take a holistic approach to lobby on relevant issues pertaining to accessibility, affordability and quality. At CASA, ULSU delegates pushed the Renewal of the Canadian Millennium Scholarship Foundation onto the federal agenda by convincing the CASA members that it was a primary advocacy goal. Set to expire in 2009, and due to leaving a \$350 million hole in the student finance system per year, this is an important issue that ULSU representatives were able to point attention. To date, we have yet to meet a single politician or bureaucrat we were unable to convince to recognize the irreplaceable value of the Foundation; the House of Commons Standing Committee of Finance has recommended unanimously to renew the Foundation. Through these successes, I am honoured to have been able to serve as an external representative with Charlotte Kingston, the ULSU VP Academic. *Written by Joanne Luu*

### CAUS

The Council of Alberta University Students (CAUS), is the provincial representative organization to the Universities of Lethbridge, Calgary and Alberta. It is in a unique position to be one of the only provincial lobby groups to represent all major Alberta universities, and to work in such close affiliation with the college and technical institutes representative body, ACTISEC; the Alberta Colleges and Technical Institutes Student Executive Council. As such, CAUS and ACTISEC have the privilege of representing a united student voice across the province.

## Political Involvement

This year's ULSU representatives were the VP Administration Joanne Luu, and the VP Academic Charlotte Kingston, who took on the role of Vice Chair of the organization. CAUS actively lobbied the provincial government throughout the year, notably being active in the following areas:

- Fighting the implementation of Bill 40; which saw the de-legislation of tuition. Responding to the outcome of the "A Learning Alberta" review, which made positive steps in implementing a CPI escalator, but failed to actually roll back tuition to a just base level.
- Working with Public Interest Alberta on the PSE task force and the resulting document.
- Participating in the partnerships, Canadian Millennium Scholarship letter writing campaign, and the Education Generation document release.
- Participated in many bureaucratic analyses of provincial programs, including the student finance board, the Alberta Council on Admissions and Transfers, and ministerial reviews of programs, jurisdiction, and provincial PSE direction.
- Directly lobbying provincial MLA's for student financial aid review, and greater capital endowments during the annual Lobby Conference in March 2007.

CAUS was unable to have tuition re-legislated or to convince the ministry of the continued need to roll back tuition, but was positively received by the Student Finance Board on such issues as removal of vehicle allowance, spousal and parental contribution, and greater access to loans, grants and other forms of assistance. This was exemplified by the 25 million dollars in additional resources that the province

allocated in spring 2007. Moreover, small changes such as an extension of repayment periods and grace periods for medical students in practicum has been a beneficial change.

The changing government and the leadership race which characterized the 2006/2007 provincial political scene left CAUS in a unique and interesting position in terms of conducting campaigns and exerting pressure on a government who was otherwise occupied, and who did not conduct a fall sitting. As a result, CAUS did not conduct extensive campaigns but focused on creating campaign reserves for the presumed upcoming provincial election. In order to ensure these reserves CAUS fees increased by over 8% this year, increasing CAUS campaign reserves to approximately \$15 000. CAUS fees will likely increase by just over Consumer Price Index for the 2007/2008 year. *Written by Charlotte Kingston*

### CASA

In 2006/2007, the ULSU participated actively in the Canadian Alliance of Student Associations (CASA) campaign and lobbying initiatives. Composed of 18 members, CASA is one of two federal lobbying organizations that represents students to the federal government. At \$2.50 per student/year CASA represents the least costly of the two alternatives, and historically has had great access to federal government officials, and an extensive multi-party lobbying strategy.

This year's ULSU representatives to CASA were VP Administration Joanne Luu, and VP Academic, Charlotte Kingston. Together they represented ULSU on the campaign and events, and the policy committee. In their capacities as such, the VPs oversaw a huge CASA campaign in which one in four U of L students participated in a very successful launch

## Political Involvement

event, and had their concerns (in the form of personalized footprints) taken to Parliament Hill. Characterized by an obstacle course, which offered one free course of tuition to the fastest participant, the spectacle symbolized “the obstacles on the path to Post Secondary Education (PSE). This event was spearheaded by the VP Administration and was very well received by students.

As the chair of the disabilities working group within CASA, the VP Academic worked with the National Educational Association of Disabled Students (NEADS) and the U of L disabilities resource center to produce the “Equitable Access to Academic Materials” policy which CASA will advocate for in future years. NEADS stated that CASA was the first student lobby group to ask for their input, and I was proud to give greater voice to this organization.

In as far as lobbying priorities were concerned, both members brought forward their concerns regarding the demise of the Canadian Millennium Scholarship Foundation in 2009, and made its renewal one of CASA’s primary advocacy goals for the year.



Though both of the external representatives were very pleased with the work and growth of this organization, towards the end of the academic year (April 2007) the ULSU President Dustin Fuller expressed concern regarding the CASA funding formula, and its associated cost to the ULSU. Given that CASA membership fees now hovered around the \$20 000 mark, and that these funds come directly from the ULSU operating budget, a vote was conducted to have the ULSU dissociate itself from CASA.

This vote was conducted on March 23rd at an emergency General Assembly meeting. Though the VP Administration was able to statistically correlate the rising fees with the U of L increase in students, and though the VP Academic vehemently asserted the importance of federal lobbying, and CASA’s effectiveness in that end, the council passed the dissociation motion through a secret ballot of 7-6.

Notably, members of council expressed differing reasons for choosing to exit the organization. Some members asserted that the fees were something the ULSU budget could no longer sustain, others did not believe that federal lobbying was an important undertaking, and one expressed a will to explore the other federal alternative: the CFS. Unfortunately, the narrow wording of the motion limited the discussion to fees and fee models, and precluded a broader discussion of the issues.

Thus, it is herein important to discuss the reasons the ULSU has in past chosen CASA as its representative organization over the other alternative. Further, it must be noted why the external representatives believe strongly in the importance of federal representation, and why the fees are justifiable in their eyes, but also how to lessen their impact on the ULSU operating budget.

## Political Involvement

Objectively, CASA has many benefits: it is 1/3 the price per student for federal representation, is the only student lobby group to be invited to meet with the last two Prime Ministers, is committed to all party lobbying, and seeks to provide solutions to identified problems rather than limiting themselves to merely pointing out shortfalls. Further, CASA's one school one vote system allows medium sized and small institutions such as the ULSU to express the voices of their students with as much strength as larger institutions. Moreover, CASA's framework of "partnering" loosely with provincial student associations and similarly minded student groups allows the ULSU to partner across the nation, giving greater voice to small and marginalized student groups, without jeopardizing its relationship with the Council of Alberta University Students (CAUS). Because of these approaches CASA has become a widely respected, and highly efficient lobby group on Parliament Hill. Current National Director Phillippe Ouellette was quoted by Minister Flaherty in the 2007 budget, and CASA policy has regularly been implemented verbatim.

In 2007 the federal government allocated an additional \$800 million in PSE directed funding through the Canada Social Transfer (CST), and they currently administer over 17 programs relating to student financial aid, research funding, and institutional funding; including 60% of the loan a student receives, and the Canadian Millennium Scholarship Foundation. Because all PSE dollars originate from the federal tax base, and because more and more pan-Canadian student initiatives have originated from the federal level, federal student representation has become more and more important over the last five years. Further, given the dedicated transfer discussion in federal politics, it is absolutely essential that students make their voices heard in the allocation of these funds, and the stipulations surrounding their distribution. Finally, the ULSU has repeatedly expressed concern over

the CASA funding formula, which takes into account not only a per student cost but also the gross revenue of the student association. This model was established to create a spectrum which neither unduly disadvantaged small or very large schools. Because all services are provided equally to all members, a base and a cap fee is implemented to create a smaller gap between member institutions, but the range is needed to ensure that small schools can access membership, and that large schools are not paying an unjustifiably larger amount for the small voice and services within the organization. However, in the calculation of gross revenue, the CASA model unfairly assesses an institution's ability to pay, by including fund pools which cannot be accessed to pay CASA fees. For example, the \$2.5 million dollars in referended student fees, which will go towards the Center for Sports and Wellness can never be accessed to pay CASA fees, and yet they continue to figure that into the calculation of our fees. These innate funding model issues clearly need to be addressed, and so in April 2007, the external representatives presented to the CASA board formal documentation of our concerns.

The CASA board has pledged to bring alternative fee models to the membership for analysis at the 2007 Policy & Strategy Conference in June. Though it is hopeful, the proposals will be more feasible than the per student fee model advanced (and defeated) in 2005, it is clear that what needs to happen is for the ULSU to externalize its external lobbying fees and implement a direct student fee in order to relieve pressure on the operating budget, or, minimally, tie the overall ULSU student levy to CPI increases. This will have to be done through a student wide referendum, and should be done at the ULSU's earliest convenience, as it will not only relieve CASA, but also CAUS related operating pressure. *Written by Charlotte Kingston*

### INTERNATIONAL EXCHANGE

#### Hokkai Gakuen Exchange

In the summer of 2007, the ULSU celebrated the 25th exchange of the Hokkai Gakuen University students with the University of Lethbridge. Their visit was marked by the ULSU with a day of fun and activities. The VPs took the visiting students for a round of mini-golf and some laps around the go kart tracks, followed by an evening breakfast at the Zoo. With 21 students, it appeared that great fun was had by all. Many in the group had never driven an automobile, and really enjoyed the novelty of go-karts.

During the evening breakfast, the ULSU presented the visiting students with a hand painted picture of the Lethbridge scenery, and the Hokkai students reciprocated with a very beautiful lamp. The students' visit was an opportunity to interact and learn about Japanese culture, and all the students who took part had an enjoyable day and left with some very interesting lessons. The Hokkai Gakuen visit is an exciting and important tradition for U of L students, and is more than worth taking part in! *Written by Charlotte Kingston*

### COMMUNITY AND CAMPUS EVENT

#### The Southern Alberta Council on Public Affairs (SACPA)

SACPA was founded in 1967 and is an independent forum and not for profit organization. They meet 35 weeks a year to debate local, provincial, national, and international issues of concern to the residents of Southern Alberta. The rationale of the Council is that the strength of a political

democracy is lodged in the freedom of citizens to assemble and freely discuss ideas and issues. SACPA seeks to promote a sense of community and citizenship amongst the public. It is strictly non-partisan in its political outlook and encourages the expression of divergent viewpoints. SACPA does not take sides on the issues debated at its sessions. Sessions are open to the public and the media. Shaw TV telecasts SACPA debates three times a week to a viewing audience of about 35,000 people throughout Southern Alberta.

Both SACPA and ULSU are structured to actively promote and encourage people to assemble where they can openly converse on a variety of topics. This fundamental principle unites our organizations, and together we can foster greater understanding on ideas and issues that impact citizens of the world as we head into the twenty-first century. This year, more specifically, we were able to make history by hosting a SACPA session right here on campus. The speaker was Simon Dyer, and the name of his presentation was "Oil Sands Fever: The Environmental Implications of Alberta's Oil Sands Rush". A special thanks goes out to the ULSU, SACPA, LPIRG, and Cody Sharpe for the hard work, dedication and determination to make this idea become a reality. *Written by Dustin Fuller*

### EVENTS OF THE YEAR

#### Welcome Back Events

When students returned to the University of Lethbridge for the Fall 2006 semester, they were greeted with a flurry of activities hosted by the Students' Union. At New Stu-



## Events

dent Orientation, the Student Council members welcomed first-time post secondary education students to the U of L campus. Information about ULSU services were distributed, along with a list of the activities and events planned for the month of September. Students were also encouraged to go to the ULSU office in person to pick up the new installment of the coveted ULSU Handbook/Daytimer, free of charge!

Annual Beer Gardens were once again held at The Zoo offering students great specials while revealing a more sports oriented atmosphere. Next came a free pancake breakfast, which lasted well into the afternoon. Students won a number of cool prizes when they participated in fun contests such as watermelon eating, trivia and a scavenger hunt.

### **Bridgefest**

Bridgefest was a one day live music event for students. Its goal was to generate more school spirit and increase morale at the U of L. Bridgefest featured a number of local DJs and performing artists, including Lethbridge locals Erin Teeple and Mike Fitzgerald. Upbeat Island acoustic band Currentswell, and rising popular rock band Superbeing, took stage as the highlight of the event. Bridgefest was hot but unfortunately the weather was not. Rain with temperatures dropping to low single digits forced a change in venue from outside to inside. Bridgefest was sponsored in part by Molson, Coca Cola, Castle Mountain and Rock 106.

### **Theme Nights**

As a show of appreciation to students for continued support of their campus pub, The Zoo offered theme nights. This year's Council wanted to continue the sports programming theme, providing a form of entertainment to students that was not hard on the wallet. Currently, The Zoo caters to its sports fans by featuring two comfortable sofa lounges with integrated big screen TVs. In addition, The Zoo has secured

a 144" screen with projector, which will give next year's students the ultimate in sports experience.

Monday started the week off with Pilsner Wing Night where patrons could enjoy the refreshing taste of their favorite beer while taking part in the 25 cent wing special. Tuesday's Games Night encouraged students to make use of the X-Box, pool table and foosball table. Wednesday had patriotism written all over the Molson Rib Night, as CANADIAN was the beer of choice, and ribs were consumed by the pound. Kookanee Thirsty Thursdays gave students the chance to dance to happy hour prices all night. Friday's University Appreciation Day helped students out with their diminishing budgets, as students could buy a slice of pizza for a buck, with a purchase of a drink after 4 p.m.

### **Chronicles Live at the Zoo**

Students received a change in pace when they were offered an intimate and free concert, as the ULSU presented "The Chronicles", with guest "Second Hand" live at The Zoo. This occasion was geared more towards residence students, as a way of saying thank you for supporting or volunteering at ULSU events.

### **Hockey Nights with Battle of Alberta**

"The Battle of Alberta" between the Calgary Flames and the Edmonton Oilers kicked off Hockey Nights this year. The Zoo was split in two as rivals gathered to root for their preferred team, while they heckled the opponent from opposite ends of the pub. For the rest of the season, students came to The Zoo to watch the Flames in action as they played their way into the Stanley Cup playoffs. A special menu was implemented for Hockey Nights, superseding regular theme night specials, still giving students a great deal on food and drink specials, while continuing the standard level of service from The Zoo's kitchen.



## Events

### CASA Campaign

Throughout the month of October, students from across Canada were given the opportunity to tell the Federal government about the challenges they faced while pursuing a post-secondary education. At campuses across the country, students were asked to write on a footprint answering the question “What is the biggest challenge on your PATH to achieving your goals through post-secondary education?”.

The ULSU formulated its own media stunt when students participated in an obstacle course, simulating the many obstacles students face on their post-secondary education path. In a true spirit of support towards students, the ULSU awarded up to \$500 in tuition, to cover the cost of one course in the Spring semester, to the student who completed this obstacle course in the fastest time.

CASA received thousands of Footprints from students coast-to-coast. Through the course of a week, the Footprints were used to build a map of Canada measuring 40' x 28', and were displayed on Parliament Hill. Plenty of media, members of the public and politicians were present to witness the challenges students face on their journey through post-secondary education.

### Halloween Cab

“Pirate Night” was the theme for this traditional event. Students had fun dressing up, and prizes were awarded for the best pirate costumes. This event was also a great time to collect for the campus Food Bank as students had to donate a non-perishable food item as an entry fee.

### Halloween “Trick or Eat” Food Bank Drive

University students participated in the annual “Trick or Eat” food drive on October 31, to help their fellow peers to hunger for knowledge, not food. Groups went canvassing door-to-door in Lethbridge neighborhoods, requesting non-perishable food donations for the ULSU campus Food Bank. The food drive stocked the shelves at the campus Food Bank in preparation for the increase in students who would access the Food Bank at the end of November, when student loan monies have often been exhausted. *Written by Calleen Van Raalte*

### Political Action Week

This year the Students’ Union made use of the Quality Initiatives Proposal monies to fund the fall semester speaker series, which took the form of Political Action Week. This three day event had daytime and evening components and featured a variety of speakers, films, events, and community partnerships.

The event was held from Tuesday to Thursday in November, and started off with a small community “Trades Fair”, which allowed space for campus and community groups to display their causes and their campaigns. There was a small turnout, but I believe there is potential for this to grow, and continue to give students and community groups an opportunity to create visibility for their initiatives. That same afternoon the film “Who Killed the Electric Car”; a film about environmentalism and corporate conspiracy, was screened in Galileo’s, to a successful turnout.



## Events

The Tuesday evening speaker brought in Greenpeace co-founder, Dr. Patrick Moore. A former radical environmental activist, Dr. Moore now runs an environmental consultation firm, and advocates many ideals in opposition to his former organization. Dr. Moore spoke about genetically modified foods, deforestation and its limitations, and the paradoxes of the environmental movement. His speech was salient, controversial and thought provoking. Many students and community members attended, some agreeing with his statements, and others vehemently disagreeing.

Wednesday brought Public Interest Alberta Executive Director Mr. Bill Moore Kilgannon to give a lunch speech about the power of the individual activist, which was conducted in conjunction with a food bank free lunch. The combined event brought in many students and simultaneously attracted attention to both the problem of student hunger, and the power of the individual to find solutions to these problems. That evening, Daniel Zopoula gave an incredibly moving speech about the depths of poverty in Africa, his personal story, and how to create change through the power of "giving of one's heart". Daniel is an immigrated minister from Burkina Faso, who now works with his charitable foundation, "Bridges of Hope" in Lethbridge, and is currently constructing a church for the children of Burkina Faso. His was one of the most moving lectures I have ever witnessed, and most in the room did not escape with a dry eye.

Thursday brought the provincial Conservative party leadership candidates to the atrium for a noon hour forum on post secondary education, and their plans for the future of Alberta. The evening brought Irshad Mangi, author of "The Trouble with Islam Today", through the University speaker series. Irshad spoke about the reformation movement within Islam, and the troubles that still exist within the broader culture. Her speech was entitled "The Power of Asking Questions", which inspired hope and empowerment.

In the spring semester a two day "Sexual Awareness Days" was conducted, and included speaker Norman Nawrocki, MTV's Love Fest Tour, and the drama departments depiction of the annual "Pretty, Witty, and Gay". The speaker series was very well received, interesting, and pushed the boundaries of dialogue, promoting sex positive dialogue, and inclusivity. *Written by Charlotte Kingston*

### **Warren Miller Ski Film – Off the Grid**

The annual Warren Miller Ski Film was produced once again at the Zoo, but was even bigger and better than before. This year's film, "Off the Grid", did not disappoint. Our local ski hill, Castle Mountain, developed and produced a ski film entitled "Secret Castle", that was shown across the world as a pre-film to "Off the Grid". Local skiers from "Secret Castle" were in attendance to share their experiences and to give autographs. Local vendors, including Alpenland, Resorts of the Canadian Rockies, Infamous Board Shop and Travel Alberta, were in attendance, adding to the overall hype of the event. Prizes totaled \$2500, as local ski shops donated a variety of prizes. This event has become more successful each year as it increases in popularity. Our campus Surf Club contributed by selling advance tickets to club members and to the general student body. The venue for "Off the Grid" was perfect. A high quality projection screen was used for the visuals, while the sound was channeled through a professional sound system. The film was loud enough to easily drown out the energized cheering of the 250 onlookers as they anticipated the new ski season.

### **Ender Bender**

The Ender Bender cab, starting at noon, celebrates the last day of class for the year. A number of local DJs displayed their talent to a very large and enthusiastic crowd. Food and drink specials were in effect and students were able to access the event free of charge.

## Events

### Welcome Back Beer Gardens

A day side Beer Gardens welcomed new and returning students to school after a long deserved break. This low-key event was a great place for students to get together to talk about the holidays and what the next semester would bring. Food and drink specials were served all day. The Beer Gardens peeked in the evening when a pay-per-view Flames game was shown at The Zoo.

### Thirsty Thursday's Red Light Green Light Cabaret

Wear a green wrist band if you want to invite social solicitation or a red wrist band if you don't. The ULSU presented Red Light Green Light Cabaret as part of its Thirsty Thursday theme night programming. Students enjoyed great food, drink specials, DJs and dancing while getting to know one another a bit better. This event was a great hit with students and many joined in the fun by auctioning themselves off as dates. All proceeds from the auction were donated to the Cancer Society.

### Pokerfest

Students entered to win not only bragging rights but also the lucrative grand prize of \$1,000 as the ULSU hosted its first ever "Texas Hold'em Poker Tournament". Three hundred spots were available at no cost to students. Four rounds were set up with each round being reduced by a third. Stadium seating was positioned around the final table of eight as one student took a ride down the river to the winners circle.

### Speaker – Norman Nawrocki

The ULSU invested in new and exciting ways to educate and celebrate sex and sexuality when they brought in inter-

nationally acclaimed sex comedian, Norman Nawrocki. Provocative, challenging, taboo-busting, brash and funny, Nawrocki's one-man educational comedy cabaret entitled 'SEX TOYS!' zeroed in on what we need to know to enjoy loving, healthy sexual relationships.

### Lovefest

In conjunction with our speaker, the ULSU also brought the LoveFest Tour sponsored in part by LifeStyles Condoms and MTV Canada. LoveFest was developed by a third party as an effort to spread the word about safer sex practices. This interactive and educational party featured local DJ performances, giveaways, contest, costumes and more. A portion of the door proceeds were donated to the Canadian Foundation for AIDS research.

### St. Patrick's Day

On Friday, March 16th, green beer was on tap at The Zoo as we celebrated St. Patrick's "Eve". In keeping with tradition, patrons celebrated in true spirit by dressing up. Celebrations were in full swing by the time ULSU General Elections results were made public and announced live at The Zoo.

### Last Class Bash

The end of the year was celebrated by the ULSU's annual Last Class Bash – the biggest party of the year. This year proved no different as students came out in record numbers to support The Zoo, the student campus pub. *Written by Calleen Van Raalte*



# Ratified Clubs



## ABOUT CLUBS

Clubs are an integral part of the University Community with combined membership consisting of more than half of the student population. Growing enrollment at the University also means an increase in the number of different clubs offered to students. This year we had another high number of 53 active ratified clubs. Once a club has been ratified by the General Assembly, each club is required to send one executive club member to a monthly Students' Union Club Council meeting. At these meetings, things of interest are discussed, such as club reports, events and activities, as well as applications for funding from the Students' Union. A ratified club not only qualifies for funding, but also for free Ballroom rental, Atrium rental and the opportunity to host a cabaret in the Zoo. This has been a great year for clubs and we look forward to 2007/2008. *Written by Susan Curtis*

## RATIFIED CLUBS FOR 2006/2007

### 1. **Action on Smoking and Health**

A social and activist group that supports healthy choices in regards to smoking. Helping people quit smoking, making policy change recommendations, and awareness events, are a few of the things we do.

### 2. **Agriculture Students Society (AGGIES)**

An active group of students who provide a social atmosphere and networking opportunities for students in the Agricultural industry.

### 3. **Anthropology Club**

A dynamic social group of friendly bodies and diverse interests. We encourage input, participation and continuity with a long-standing academic partnership with the community. Intended primarily as a social club, where we encourage and welcome all new members' input and direction.

### 4. **Apprenticeship for Humanity**

The goal of this club is to promote volunteerism and community, both locally and globally.

### 5. **Archaeology Club**

A great way to get involved in the growing archaeological community in Lethbridge with events like movie nights, barbecues, field trips, lectures and conferences. From Indiana Jones to Ancient Israel, the Archaeology Club is the place to meet people from all different backgrounds who share a common interest in archaeology and our material past.

### 6. **Arts Society**

The Art Society is a club dedicated to promoting and fostering the visual arts in and around Lethbridge with a focus on art created by University students.

## Ratified Clubs

7. **Bioethics Club**  
This club is focused around the study of the ethical and moral implications of new biological discoveries and biomedical advances, as in the fields of genetic engineering and drug research.
8. **Campus Conservative Association**  
For conservative minded students with an interest in politics, who explore political ideas and policies.
9. **Catholic Community**  
The ULCC is focused on being a Catholic support group for Catholics on campus. We offer many events throughout the year to help students grow in their faith and meet other Catholics.
10. **Cheerleading Club**  
Provides support for University of Lethbridge sport teams by developing and implementing Cheerleading entertainment.
11. **Chemistry and Biochemistry Club**  
Check your stereotypes at the door, because this club does more than just study. They provide food, friends, and fun events like BBQ's, bowling, billiards, and movies. Social networks between students and professors, job and study group opportunities are also enjoyed.
12. **Climbing Club**  
The Climbing Club aims to promote all forms of climbing, whether indoor or outdoor, while enhancing physical fitness, health and a positive social atmosphere.
13. **Community of Discovering Islam (CDI)**  
Promoting peace and knowledge in an Islamic environment.
14. **Computer Science Club**  
Is initiated to encourage more and more students to participate in the activities proposed by the club. The club also increases the awareness of computer science facilities in the University. They organize programming sessions for all the students who are interested in participating in programming contests.
15. **Debate Society**  
This club is committed to developing analytical thinking and public speaking skills, as well as fostering intellectual discussion through competitive debating.
16. **Education Undergraduate Society (EUS)**  
EUS is established to promote and develop an alliance with the Faculty of Education and the Alberta Teachers Association. EUS acts as a liaison between students, faculty and staff of the Faculty of Education.
17. **Environmental Science & Biology Club (BE AWARE)**  
They are committed to raising concerns and discussing environmental issues on campus, as they relate to both community and global contexts.
18. **Figure Skating Club**  
Members have access to weekly scheduled ice time. The Figure Skating Club offers the members a chance to meet new people while having fun and staying fit.



## Ratified Clubs

19. **French Club**

To give all the University of Lethbridge students the opportunity to speak French and learn about French culture in a social environment. All French Club events are designed for all levels of French, from beginner to Francophone.

20. **Gay and Lesbian Integrity Association**

The purpose of this club is to create a positive, safe social group for Gay/Lesbian/Bisexual/Transgender persons, as well as promoting respect and understanding between members and non-members.

21. **Greek Life Club**

The Greek Life Club is devoted to the promotion of Greek life on the U of L campus, and holds Greek awareness events.

22. **Heads of Hip Hop**

The goal of the Heads of Hip Hop is to expand the Hip Hop community in the city of Lethbridge. Together they appreciate, live, teach and learn about the Hip Hop culture.

23. **Health Sciences Undergraduate Association**

The HSUA promotes professionalism, education and social activity among members of the association. They are a bridge between students and faculty in order to create unity and effective communication.

24. **Hillel Club**

A Jewish Students Association on campus, bringing together Jewish students and non-Jewish students alike, to promote education about Judaism on campus.

25. **Improv Club**

To provide students with an outlet to learn and practice the skills associated with improvisational theatre.

26. **International Students Association (ISA)**

A student run club created for students to intermingle into Canadian Society and also for the Canadians to learn about other cultures.

27. **Inter-Varsity Christian Fellowship (IVCF)**

An interdenominational, student run club, committed to serving the University of Lethbridge community by meeting the everyday needs of people, and teaching them how to develop dynamic, meaningful relationships with students, faculty and Jesus Christ. Wanting everyone to discover the life they can have in him.

28. **Japanese Anime and Manga Society**

An organization promoting the appreciation of Japanese culture and furthering our understanding of it through viewing animation and reading manga.

29. **Kinesiology & Physical Education Students Society**

A group to provide Kinesiology, Physical Education and Exercise Science students with various opportunities within the health and wellness fields. They provide students with volunteer positions, leadership opportunities and information regarding potential career options with a B.A/Bsc and Bsc.Ex.Sci.

30. **Law Club**

An extracurricular activity designed to enhance the members objective of Law School. The club will provide information on Law School application processes, LSAT's, Law School, different streams of law and the happenings of law in general.

## Ratified Clubs

31. **Lethbridge Students for Life**  
Lethbridge Students for Life was created to raise awareness about life issues, such as abortion and euthanasia. As members, we hope to become more educated and articulate about these issues and direct the public to various pro-life resources. LSL holds events that promote reflection and discussion regarding bio-ethics amongst students and staff at the University.
32. **Mature Students Club (MSC)**  
An informal group of students who wish to enhance the experience of students who are returning to school after an extended absence. Gathering together in a social environment, the members of MSC will provide guidance, friendship and advice to each other and have fun along the way.
33. **Management Students Society**  
MSS is committed to creating opportunities for students to enhance their university experience. They offer academic, social, and charity events to enable students to network, develop skills, and engage in student leadership.
34. **Mixed Curling**  
Provides an exciting environment to enjoy the game of curling while getting to know other members of the University of Lethbridge community. The club provides an experience that will be remembered years after you have been involved.
35. **Model United Nations Club**  
Would you like to attend a Model United Nations Conference? Then this is the club for you.
36. **Motorcycle Club**  
For the motorcycle enthusiasts, the club includes organized rides, opportunities to buy or trade gear, and trips to B.C.
37. **Native American Student Association (NASA)**  
Promotes inter-cultural relations, unity amongst club members, and to give Aboriginal students a strong voice at the University of Lethbridge. NASA offers the membership, including non-natives, school spirit through activities, events and a NASA lounge. NASA implements activities that showcase First Nations talent and allows all University of Lethbridge students to learn about Native traditions and culture.
38. **Organization of Residence Students (ORS)**  
We provide safety and security to people living within the University of Lethbridge residence, along with activities and events.
39. **Percussive Arts Society (PAS)**  
Club members perform drumming activities from around the world, including steel band, African drum and dance ensemble, and classical percussion ensemble. All groups come together as the "Global Drums Percussion Ensemble". The club actively performs on and off campus, brings in guest artists, attends conventions, and presents clinics. Membership is open to everyone.



## Ratified Clubs

40. **Philosophy Club:**  
Casual format based discussions with refreshing beverages. Non-philosophy majors welcome.
41. **Physical Theatre Society:**  
A group devoted to academic enhancement and exploration of creativity.
42. **Political Science Association (PSA):**  
Provides engaging, exciting events for students who are interested in politics or just want to have some fun.
43. **Pre Med Club:**  
The Pre Med Club wishes to help prepare students for their medical school admissions process, to provide an atmosphere of knowledge sharing, to promote humanitarian actions, and to facilitate social and academic networks.
44. **Pre-Veterinary Club**  
A club for pre-vet students or anyone interested in animals. Provides many beneficial experiences for any student applying into a professional program.
45. **PS III International Club**  
A club for students who's practicum places them outside Canada. They address procedures, and provide ways to improve the international practicum.
46. **Psychology and Neuroscience Club (PANiC)**  
This is a great club to get involved with if you are a psychology or neuroscience major. We are very busy and host some very exciting events.
47. **Rotaract Club**  
Provides the opportunity to develop professional and leadership skills. Works in cooperation with Rotary International clubs and motivates young people for eventual membership in Rotary.
48. **Salsa Dance Club**  
We meet weekly for Salsa dance lessons. Classes are open to all members for free or at a \$5 drop-in cost for non-members. Membership is \$20 per academic year.
49. **Society for Creative Anachronism (SCA)**  
Recreates the Middle Ages "as they should have been", with feasts, tournaments and competitions.
50. **Spanish Club**  
Where students with any level of Spanish can meet to improve and practice the language and learn about the culture through regular events, activities, and meetings.
51. **Surf Club**  
An opportunity for people interested in surfing. Members learn about and participate in the sport through an annual surf trip, as well as other activities and social events throughout the year.
52. **Theatre Arts Society (TAS)**  
To promote the performing arts of all forms within the University to the students and the community. TAS also makes it easy for the members of the theatre community to come together, even without a theatre venue.
53. **Trolls Rugby Football Club**  
A co-ed social and recreational club with an objective to promote, play, and celebrate the sport of rugby in all its aspects. We take any level of players and welcome social members.



# Scholarships, Bursaries, Awards

“Go confidently in the direction of your dreams. Live the life you have imagined”. -Henry David Thoreau-

All of the people listed below who have received awards embody this quote fully. It is an honour for the Students’ Union to give these amazing individuals the recognition which they fully deserve.

## LAURENCE DECORE AWARDS

These awards were established in 2001 by the Government of Alberta, in honor of the Liberal Provincial leader Laurence Decore. This scholarship recognizes post-secondary students who have demonstrated outstanding dedication and leadership in student clubs, student government, college/ university life, and community involvement.

**Awarded to:** JJ Machalski, Katrina Perehudoff, Philip Ney, David Rumer.



## STUDENTS’ UNION BURSARIES AND SCHOLARSHIPS

The Students’ Union makes available \$8,000 in scholarships and bursaries each year for the University of Lethbridge students. They have a wide range of qualifications to accommodate a variety of circumstances. They are as follows; The Community Service Award Scholarship, Students’ Union Bursary, Students’ Union Emergency Bursary, Students’ Union Placement Bursary, Students’ Union Part-Time Scholarship, Students’ Union International Travel Scholarship, Students’ Union Scholarship, Students’ Union Coca-Cola Scholarship, Students’ Union Coca-Cola Bursary, Students’ Union Coca-Cola North Scholarship.

### New Scholarship and Bursary

New to this year was the QIP Scholarships and Bursaries which yield a combined total in the fund of \$105,000.00. Each QIP scholarship or bursary award has a minimum value of \$1,000.00.

## STUDENTS’ UNION AWARDS

### John Brocklesby Students’ Union Award of Excellence:

This is a prestigious award presented to the University of Lethbridge Students’ Union General Assembly member who has made the most significant contribution to the Students’ Union, the students of the University of Lethbridge and the university community.

**Awarded to:** Nic Barker - Faculty of Arts and Science Representative and Director.

Nic was chosen for this award because of his enthusiasm, dedication and hard work when taking on initiatives. His focus was definitely on students and how he could make

# Scholarships, Bursaries, Awards

things better for them. Nic has always gone the extra mile, and was always there when someone needed help with anything.

## **Bill Chapman Students' Union Certificate of**

### **Distinction:**

This is an annual award presented to the University of Lethbridge student, or students, who have shown the most innovation in the area of student affairs, wellness, or another notable field, over the past year.

**Awarded to:** Dustin Fuller - President

Dustin continues to give direction to the Students' Union in such a way that he needs to be recognized with this distinguished award for the second year in a row. Dustin is not afraid to take chances and put himself out there for new ideas.

## **The Students' Union Helping Hand Award:**

This is an annual award presented to a University of Lethbridge faculty or staff employee who has made the most significant and lasting contribution to the University of Lethbridge Students' Union and their members over the past academic year.

**Awarded to:** Calvin Toth - Sound & Videoconferencing

Calvin does all the media work for the University of Lethbridge and the Students' Union. He is always willing to help the Students' Union with any project, and is a natural trouble shooter for any problems we come across. If there is anyone who needs tech support any time, Calvin is the first to come to mind.

## **The Students' Union Employee of the Year Award:**

This is an annual award presented to the Students' Union employee who has demonstrated the most outstanding contribution and ethics to our organization over the past year.

**Awarded to:** Ben Giesbrecht - Zoo Manager

Ben is always willing to give you a hand, no matter what you need. The dedication and hard work that he puts into his job is something to look up to. When ever you see this individual you are greeted with a smile and a huge "Hello; and How are you?"

## **The Students' Union Student Employee of the Year Award:**

This is an annual award presented to the Students' Union student employee who has demonstrated the most outstanding contribution and ethics to our organization over the past year. This individual personifies the values of the University of Lethbridge Students' Union in all his/her endeavors and is enrolled as a full-time student at the University of Lethbridge.

**Awarded to:** Tracy Merrifield - Service Centre Clerk

Tracy is very committed to her job. She shows up everyday, with a smile on her face and caring in her voice. She is a hard worker, welcoming, cheerful and friendly. Tracy is irreplaceable.

## **The Students' Union Club of the Year Award:**

This is an annual award presented to the Students' Union ratified club which has demonstrated the most outstanding effort and dedication in their endeavours over the past year.

## Scholarships, Bursaries, Awards

**Awarded to:** Political Science Association

This year there were a record number of clubs on campus, many of which contributed greatly to the school and the community. The Political Science Association was chosen for its outstanding effort and dedication to campus life in various ways.

**Student of the Year Award:**

This is a new annual award presented to the student(s) who embody leadership, commitment, and contribute to the betterment of U of L students; this may be exemplified by involvement in clubs, non-profit organizations, student organizations, community, and volunteerism.

**Awarded to:** Samantha LeCerf

Samantha has shown a tremendous amount of leadership and commitment to the General Assembly, in addition to helping at the SU front desk, the Zoo and the Food Bank. This council year would not have been such a great success without her dedication and tremendous work ethic.

**The Students' Union Legacy Award:**

This is an annual award presented to the Students' Union President at the close of his/her term pending successful completion.

**Awarded to:** Dustin Fuller - President

"Legacy", by definition is giving a part of yourself by will. This year's current President is no exception to that rule. Dustin gives his all in any endeavor that he pursues.

"Thanks", is not enough for what Dustin has left in the minds and hearts of those who he has helped, influenced and inspired.

**Outstanding Dedication Award:**

In special recognition for outstanding dedication to the students of the University of Lethbridge.

**Awarded to:** Randy Ockerman - ULSU Bookkeeper and Service Centre Manager

Randy is always looking for the best deals which benefit the students and the Students' Union. The dedication, hard work, honesty and patience that Randy shows is amazing. He is a no-nonsense type of guy and that is what makes him so good at what he does.

**Continued Support Award:**

For continued support to the Students' Union of the University of Lethbridge.

**Awarded to:** Peter Langridge - Quest Support Services

This is a proud award, and for the past 13 years, three times a week, Peter has come on campus to enrich the lives of the students and the staff. Without this man's help the amount of monies in student scholarships would not be as high as they are. It is through his sense of commitment and pride in the collection of bottles and cans on this campus which makes it all possible.

"Try not to become a person of success but rather try to become a person of value". -*Albert Einstein*-



## Questions and Answers

### **Dustin Fuller - President**

- Q:** What challenged you the most during your Term?
- A:** Finding ways to get more students involved and informed on issues that truly have an impact on their post secondary education.
- Q:** What Advice do you have for you Successor?
- A:** Patience is a Virtue! Make sure that you always have student interests at heart and never be discouraged. Keep fighting the good fight to accomplish goals or initiatives that you believe will benefit others.

### **Joanne Luu - Vice President Administration**

- Q:** What challenged you the most during your term?
- A:** The greatest challenge for me was learning that the logical, morally correct argument doesn't always win at the end of the day. As a political scientist, recognizing this lesson outside the classroom was tough, but one that I will never forget.
- Q:** What advice do you have for your successor?
- A:** The best advice I could give to my successor is to ensure that every step he/she takes is part of a greater move that progresses the team forward. In this, a clear set of goals and objectives and copious amounts of communication is key.

### **JJ Machalski - Director & Management Representative**

- Q:** What challenged you the most during your term?
- A:** What challenged me the most was knowing that there

is only so much that I can do. I devoted so much of my time to this organization that at times my personal life and academics suffered. All I wanted to do was help students and make sure that we served them to the best of our ability. I constantly had to remind myself that one man can only do so much.

- Q:** What advice do you have for your successor?
- A:** Stay true to who you are and stick by your decisions. Don't be afraid to admit your mistakes, and never stop learning. Always approach every problem and situation with an open mind.

### **Angela Ng - Arts and Sciences Representative**

- Q:** What challenged you the most during your term?
- A:** The most challenging aspect of my term was to balance my Students' Union duties with my academics, as it was the last year of my degree. As much as I wanted and tried to be more involved, it was difficult to immerse myself in the Students' Union as it takes much commitment, time and passion to represent students and to be apart of something so great as student politics.
- Q:** What advice do you have for your successor?
- A:** I would advise the incoming successor to get involved as much as they can to stay dedicated while balancing their academics, get as informed as they can on an issue and vote no matter what others think (get both sides of the story), learn the new bylaws and policies, learn and know how to separate business (SU) life with personal (social) life, do not get too emotionally attached, as there will always be someone to criticize, and remember to have fun!

## Referendum and Election

### UNIVERSAL BUS PASS (U-PASS) REFERENDUM RESULTS

October 17-19 the ULSU held a referendum asking students if they support the implementation of a Universal Bus Pass (U-Pass) here at the University of Lethbridge. If the referendum results had proven favorable, all U of L undergraduate students would have received a pass giving them unlimited access to Lethbridge Public Transit for only \$52.50/semester. The cost is equivalent to the current cost of a one-month student fare.

#### Background Information

The increase in ridership would allow LA Transit to increase service to 15 minute intervals in peak periods on three routes, and extend weekend service hours.

U-Passes across Canada have been proven to reduce traffic congestion, reduce transportation costs for students, reduce greenhouse gas emissions, and increase mobility for a large segment of the population. U-Passes also allow universities to preserve green space rather than investing in unnecessary and unsightly parking garages. The U-Pass would benefit all students, not just those who ride the bus right now. Drivers would be able to leave their cars at home saving them money and parking hassles. Cyclists would have added flexibility during bad weather. Even those who would have to drive every day would be able to pop downtown during the week, or be able to get around on weekend evenings. The U-Pass would pay for itself with three cab rides home from the bar and with the new federal tax credit it would bring the U-Pass down to \$44/month.

Twenty other Canadian campuses have a U-Pass system, ranging from \$50-100 per term. The U of L pass would be among the cheapest in the country. Four Calgary campuses participate in a U-Pass program. While U-Passes have proven extremely popular on other campuses, it would still be a new fee for U of L students. Student representatives recognize that many students have questions and concerns about the U-Pass, particularly the many students who currently drive to school.

There were four Town Hall meetings held in October of 2006 which included speakers: the Mayor, Dr. Cade, Liz W. (Alderman) John King (LA Transit Manager), and student speakers.

#### Referendum Question:

Do you agree to the increase of student fees by \$52.50\* per semester (fall and spring semesters only) in order to obtain a city wide bus pass (U-Pass) for all undergraduate students registered in one or more courses at the Lethbridge Campus? (\* the current cost of a one month adult bus pass)

59.73% of people answered NO (2634 people)  
40.27% of people answered YES (1776 people)

To avoid the cost of a future referendum, do you agree to allow future increase to the cost of the U-Pass, as long as the per semester fee never exceeds the cost of a one month adult bus pass?

62.95% of people answered NO (2776 people)  
37.05% of people answered YES (1634 people)



# Referendum and Election

U-Pass Referendum Vote For Undergraduate Students  
Total Voters: 7048  
Total Who Voted: 4410  
Percent Who Voted: 62.57%

The ULSU would like to thank all those students who participated. There were more students who voted in this referendum than there is nationally during a Federal Election. This just shows how much U of L students care. Way to Go!

*Written by Colleen Van Raalte*



## ULSU GENERAL ELECTION

### Campaigning

Due to some election bylaw restrictions, campaigning was very creative and drew a lot of attention. There was a good

turnout to both the Town Hall meeting and the Debate. The Meliorist published an issue that was very election heavy, which proved to be a great way to initiate interest amongst students. CKXU aired two sets of interviews, which were very well received by the university community. Only a few fines were handed out for poster violations, and over all it was a very exciting and clean campaign week.

### Voting

Unlike previous years, the bulk of the votes were cast on the last two days the electronic polls were open. The combined use of mass e-mails, screen savers, notice board announcements and information on the Student's Union website, worked together as great reminders for the students to vote.

### Results

Although the turnout of 27% was not as high as last year at the University of Lethbridge, it was still great on a national level. By allowing the use of Internet networking, such as facebook.com, creative campaigning and the current executive's involvement, next year should yield an even higher turnout.

The election results were announced in the Zoo during the St. Patrick's Day party, which gave the event an additional air of comradery and excitement. There was a large turnout to hear the election results, which was evident as waves of cheering were heard throughout the building during each announcement. *Written by Susan Curtis*

## Incoming Council for 2007/2008

### INCOMING COUNCIL FOR 2007/2008

#### Executive Council

President	Kelly Kennedy
Vice President Academic	Jason Pan
Vice President Administration	Adam Vossepoel
Vice President Internal Affairs	Richie Evans

#### General Assembly

Arts and Sciences Representatives	Raina Schemenauer
	Jason Blades
	Trish Harper
	Jenn Prosser
	Jonny Tan
	Zahra Abdelrazzak
Education Representative	Rebecca Nelson
	-Fitzpatrick
Fine Arts Representative	Andy Davies
Management Representative	Derrek Wenisch
Residence Representative	Steve Brodrick
Calgary Campus Representative	Ty Tang
Edmonton Campus Representative	Neema Mbowe
Board of Governors Representative	Charlotte Kingston

#### Vacant Positions for the Fall 2007 By-election

Health Sciences Representative	Vacant
International Representative	Vacant
First Nations, Métis, Inuit Representative	Vacant



April 2007 Changeover Retreat



# Past Presidents

Being a Students' Union President requires a lot of time, energy and dedication to student issues at the University of Lethbridge. With determination and long hours put into the betterment of student life, each passing Students' Union Council leaves a legacy of resolutions unique to their own particular term in office.

The following is a list of past Students' Union Presidents, each of whom has devoted their term to address student issues throughout campus.

2006/2007	Dustin Fuller	1981/1982	Barry Weintraub
2005/2006	Tyler Tanner	1980/1981	Rudy Peters
2004/2005	Loralee Edwards	1979/1980	Alan Murray
2003/2004	Paul Daniels	1978/1979	Pat Dortch
2002/2003	Melanee Thomas	1977/1978	Howard Reid
2001/2002	Matthew McHugh	1976/1977	Wayne MacKay
2000/2001	Dezmond Belzeck	1975/1976	Lee Ens
1999/2000	Bonnie Androkovich	1974/1975	Darryl Ross
1998/1999	Ryan Dunford	1973/1974	Khym Goslin
1997/1998	Jon Wescott	1972/1973	Jesse Snow
1996/1997	Jason Shriner	1971/1972	Ken Runge
1995/1996	Arthur Wong	1970/1971	Robin Dann
1994/1995	Humberto Aspillaga	1969/1970	Lamont Nielson
1993/1994	Poul Mark	1968/1969	Richard Wutzke
1992/1993	Justin Penny	1967/1968	John Brocklesby
1991/1992	David Legg		
1990/1991	Terry Whitehead		
1989/1990	Jon Oxley		
1988/1989	Jon Oxley		
1987/1988	Jason Slemko		
1986/1987	Dan Laplante		
1985/1986	Aaron Engen		
1984/1985	Tracy Hembroff		
1983/1984	Mike McPhail		
1984	Larry Glazer		
1982/1983	Chuck Cosgrove		

